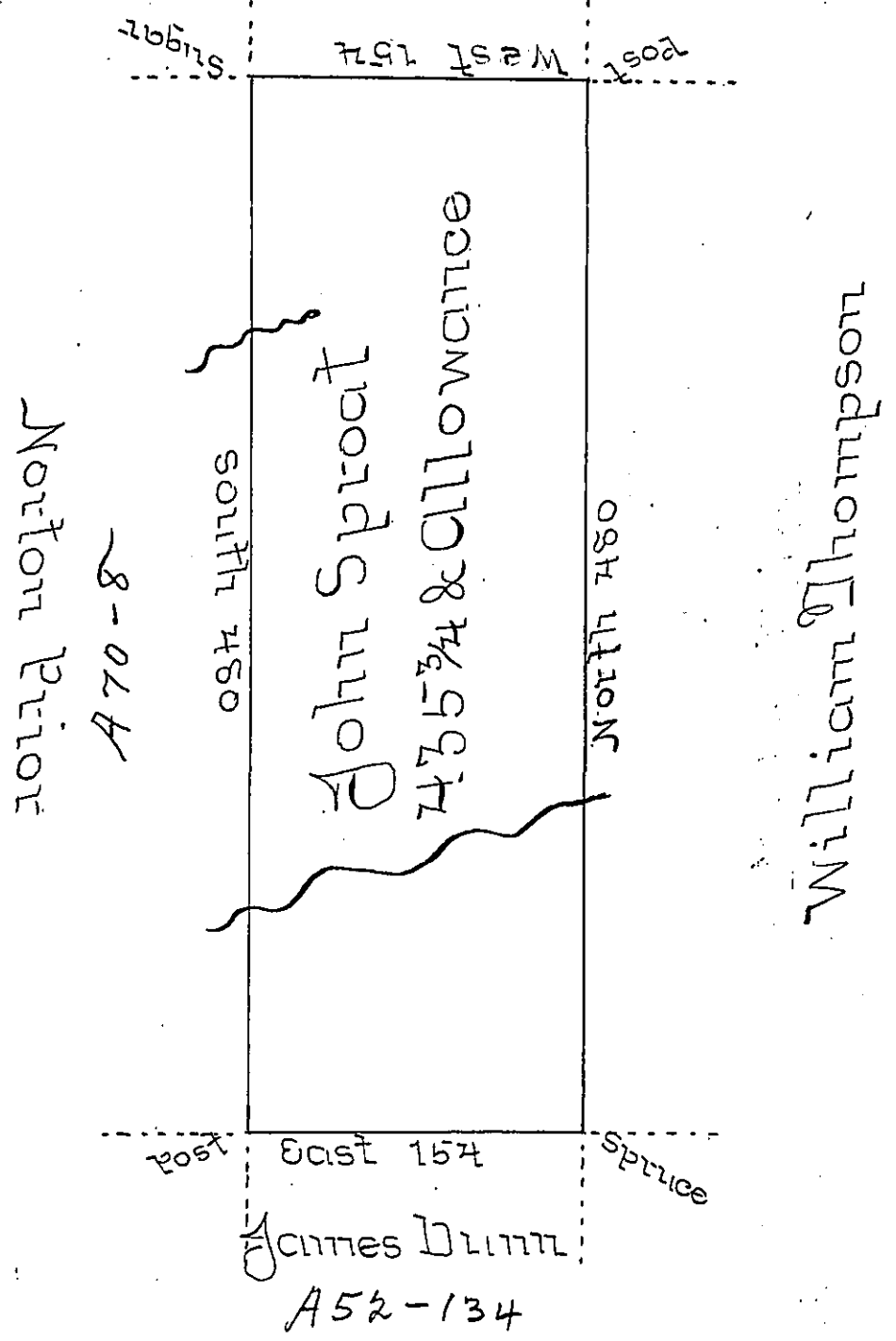


Edmund Barry Joseph Spence



Situate on the waters of Shade Creek in Lymington s  
 Township now Somerset County, surveyed 16<sup>th</sup> July 1794.  
 by Geo. Woods Esq: late US. as appears by his Official Draft  
 remaining in my Office in pursuance of a Warrant grant-  
 ed to John Sproat dated 4<sup>th</sup> February 1794 certified this  
 25<sup>th</sup> Day of January 1804 by

John McClean Deputy

To Samuel Cochran Esq: }  
 Surveyor General }

*IN TESTIMONY* that the above is a copy of the original remaining on file in  
 the Department of Internal Affairs of Pennsylvania, made  
 conformably to an Act of Assembly approved the 16th day of  
 February, 1833, I have hereunto set my Hand and caused  
 the Seal of said Department to be affixed at Harrisburg,  
 this sixth day of February 1900.

*James W. Pitta*  
 Secretary of Internal Affairs.